

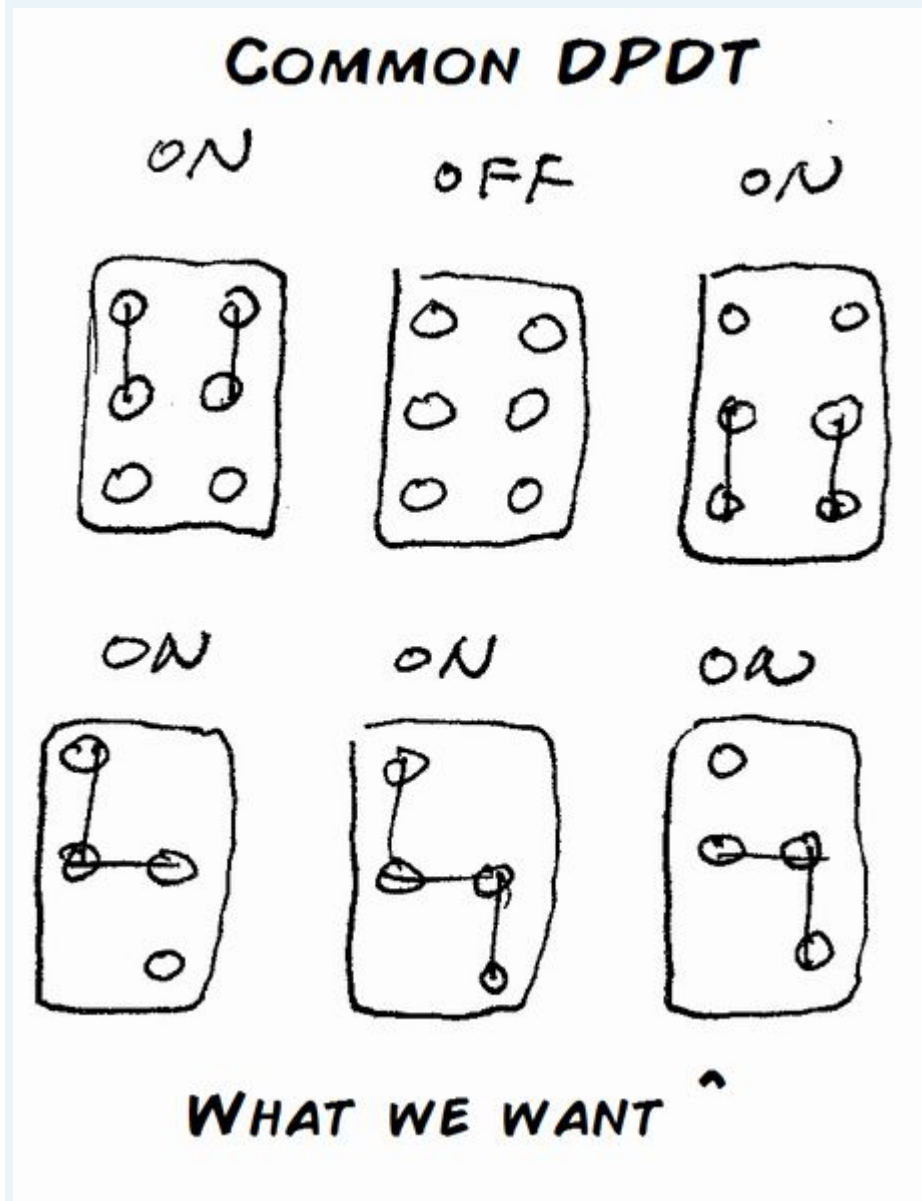
HOW-TO: Convert On-Off-On DPDT switches to On-On-On Selector switch.

This tutorial will show you how you can convert a DPDT switch to a Guitar selector switch in a few minutes of DIY.

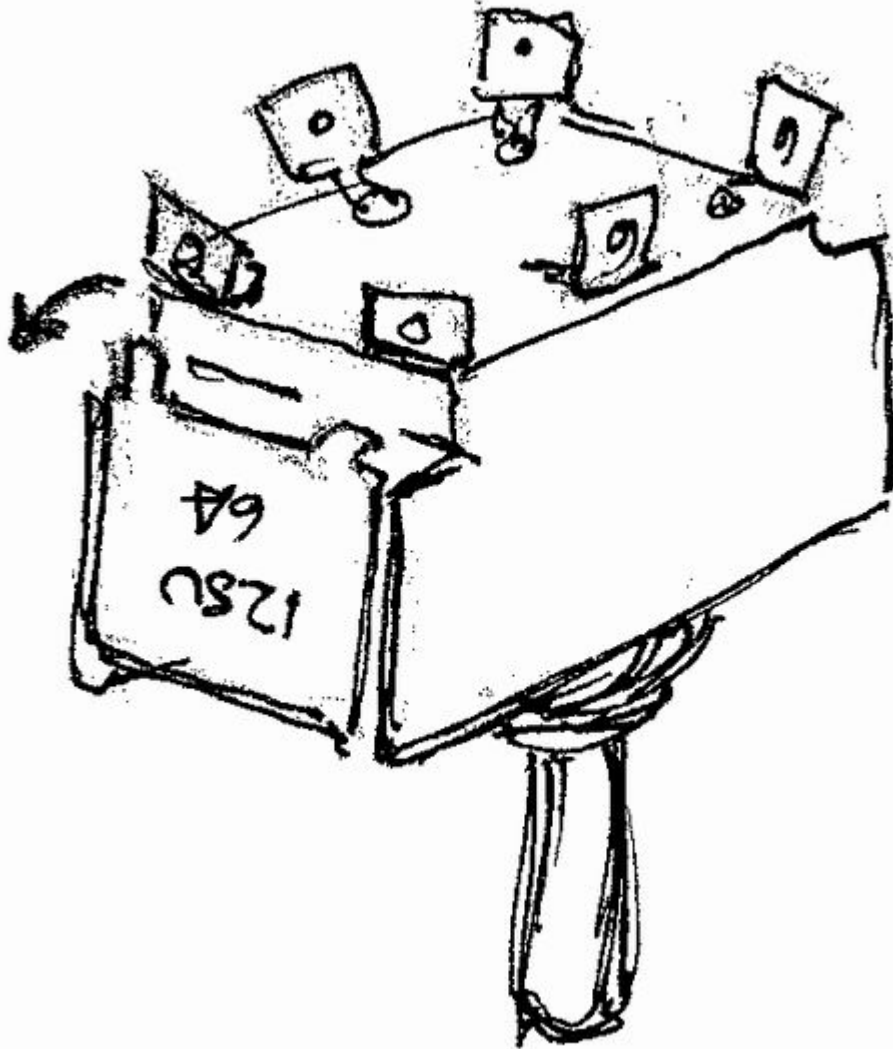
WHAT YOU NEED:

- Heavy duty DPDT 3 way Toggle switch

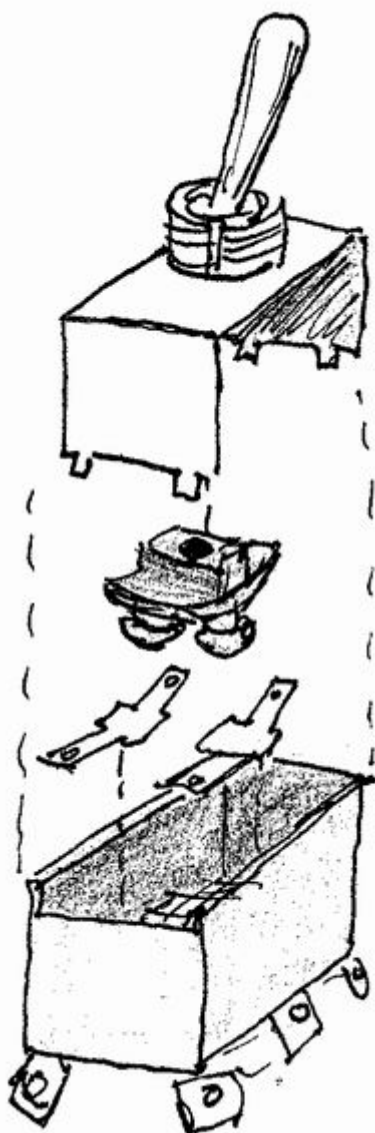
Before we start, this diagram is basically what this mod will do



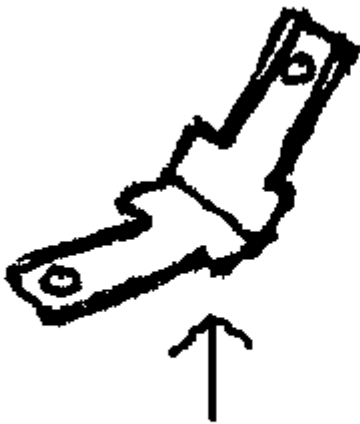
First, you'd want to start off by bending the tabs back to take off the cover.



It **SHOULD** come apart like this. if your toggle switch doesn't have a rocking contact point as shown in the sketch, this DIY mod will not work.



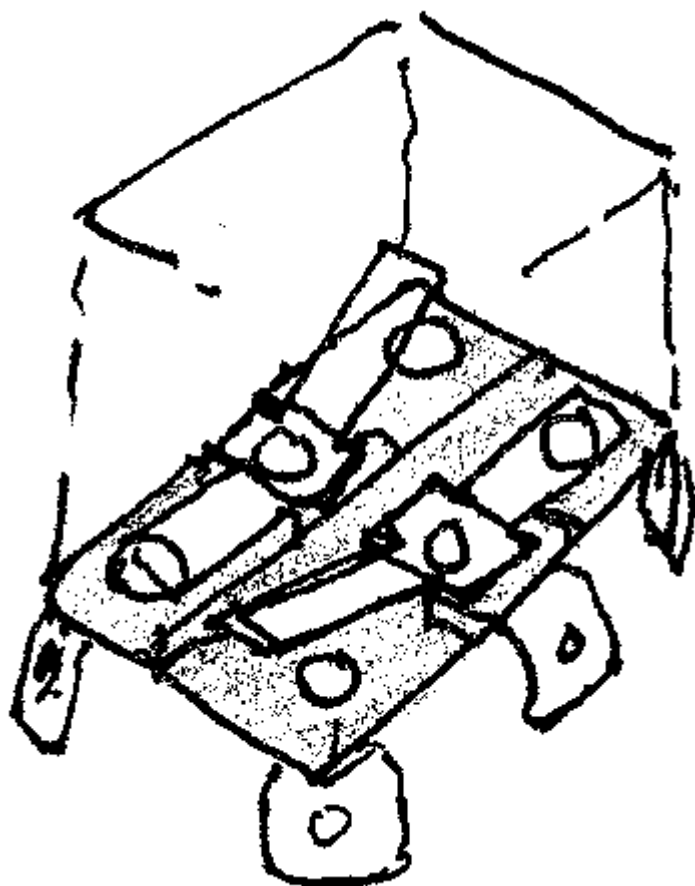
Then you'll bend the contact points as shown below



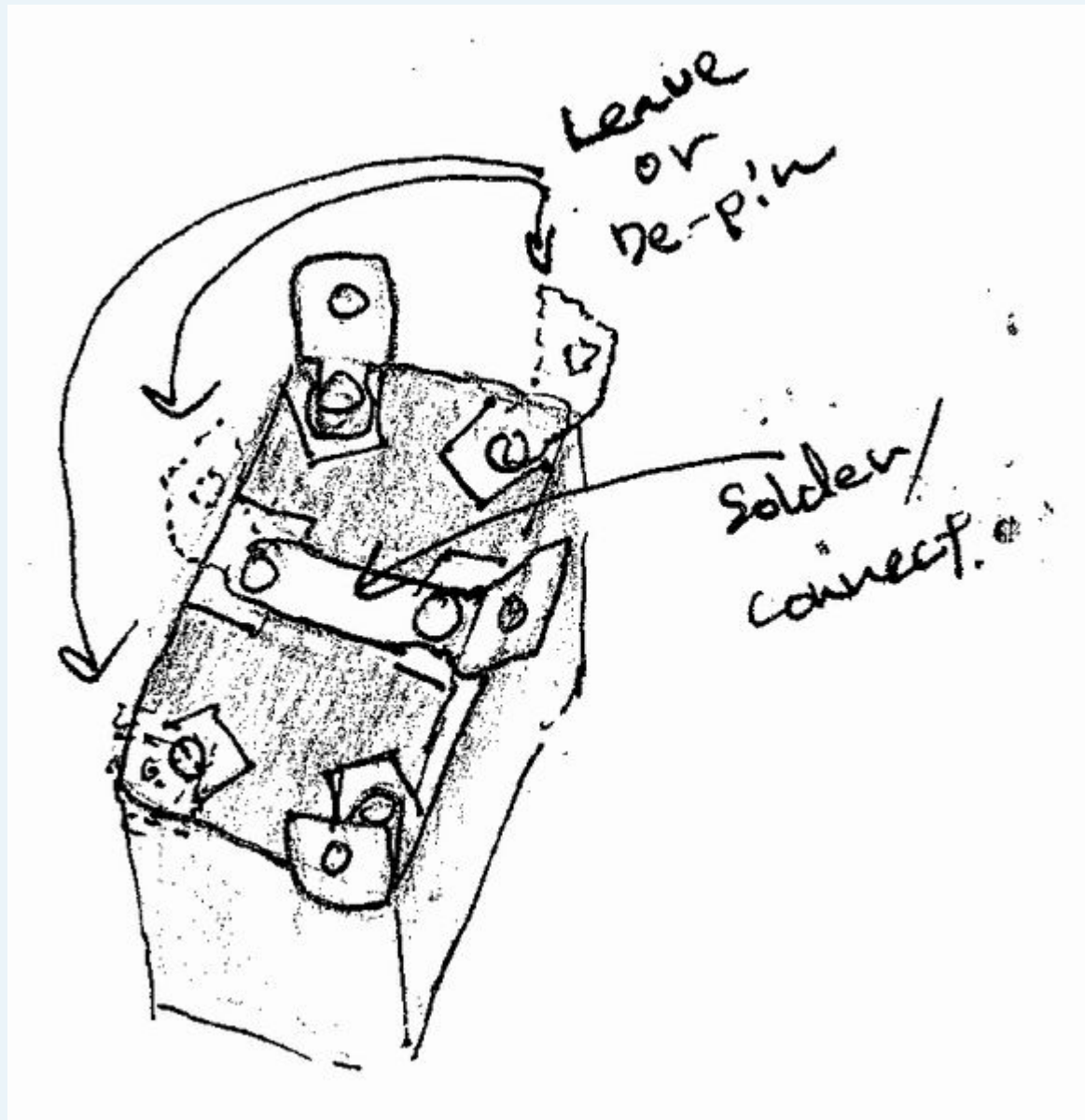
THIS THING



And place them like this. Each terminal should have one contact point touching on the opposite side of each other in the CENTER position of the toggle switch.



Then solder / connect the middle contact point. which goes to the output jack. You can either de-pin or leave the 3 unused terminals.



And there you have it.

